

VOX



PRIMERRA

SPC FLOORING

WHAT IS SPC ?

SPC, which stands for Stone Polymer Composite, features a core that is typically comprised of around calcium carbonate (limestone) and polyvinyl chloride

SPC is designed to identically replicate traditional flooring materials such as stone, ceramic, or wood, yet provide many more practical benefits. Using realistic photographic prints along with a clear, vinyl top layer, SPC opens the door to a wide variety of design concepts.



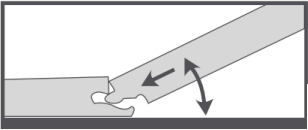
MAIN FEATURES



Quick and Easy Installation.



Levelling Unevenness



Drop lock technology



Water - resistant



Stain Resistant



15 Years Warranty - Residential



COLLECTIONS



GOLDEN OAK



OAK MIST



IMPERIAL OAK



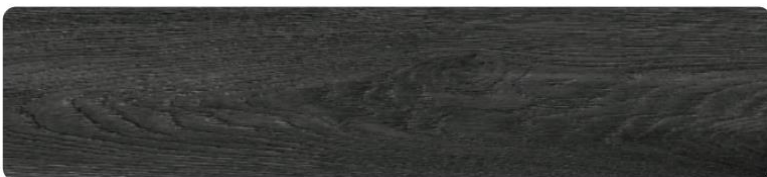
WESTERN OAK



NORDIC OAK



WALNUT OAK



OAK EBONY



CHERRY OAK



CARAMEL OAK



MALT OAK

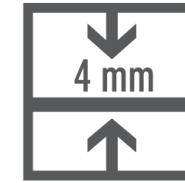
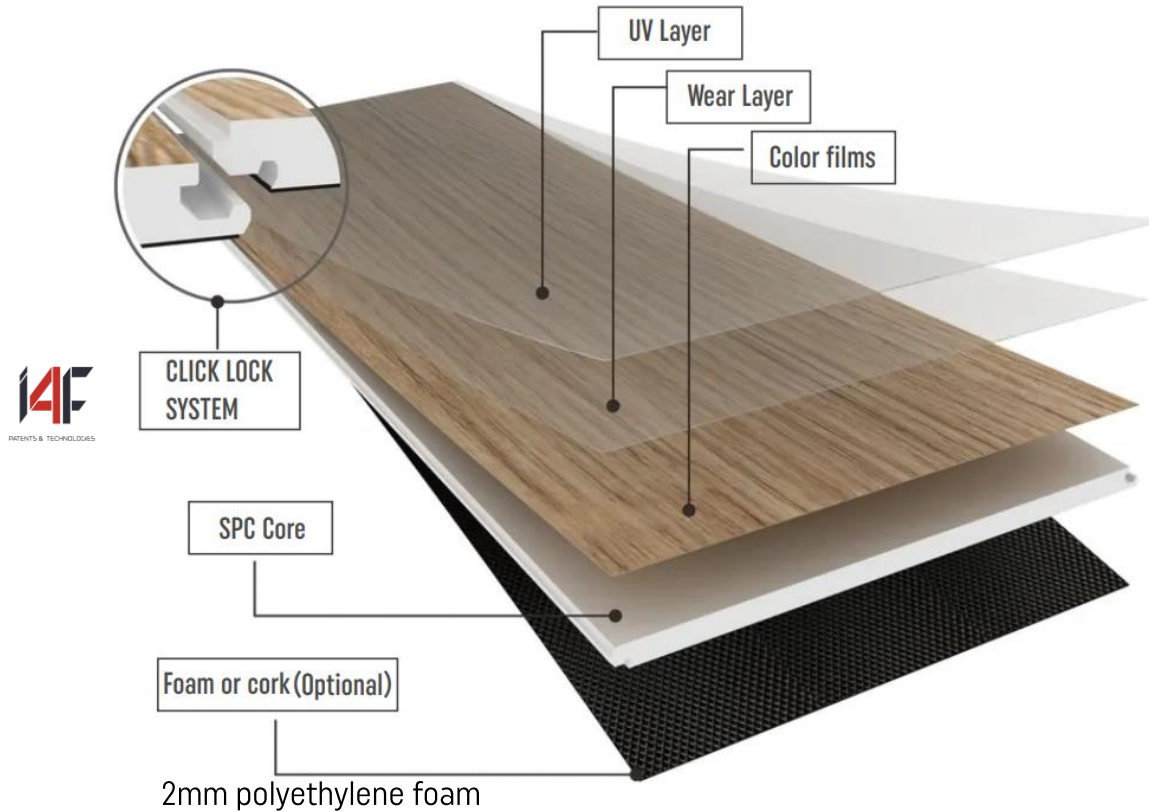


NATURE OAK

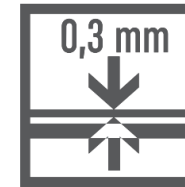


CONCRETE OAK

SPC FLOORING STRUCTURE AND DIMENSIONS



Thickness : 4 mm.



Wear layer : 0.3 mm

Weight
25.06 kg per box
1.79 kgs per panel

Area
0.22 sqmtr per panel
2.40 sqft per panel



1220 mm



183 mm



14 pcs



3.13 m² / box

33.69 sqft / box

MOST IMPORTANT FLOOR PARAMETERS

Total thickness	4 mm
Thickness of the wear layer	0,3 mm
Lock	I4F (PATENTED TECHNOLOGY)
Packaging	3.13 m² (1220x183) 14 tiles
Wear Layer Thickness	0.3mm
Density	2020 kg/m3 (ISO 23996)
MOR (Bending strength)	23.5 Mpa
MOE (Elasticity Modulus)	4500 Mpa
Peeling strength	Ave ≥ 80 N /50mm Single ≥ 75 N/50mm (EN 431)
Locking Strength	155N/50mm (short side)
Surface Scratch	2500g (ISO 1518)
Wearlayer abrasion resistance (surface abrasion)	0.018g /1000r (CS-17) (EN 13329 Annex E)
Reaction to fire (30s Exposure Time)	No flaming droplets, the sample in contact with flame gets black and blistered ISO 11925-2:2010
Impact Resistance	Big ball : ≥1800mm (Pass)
Castor chair	25,000r (EN425)
Micro-scratch Resistance (Scratch-resistant test)	≤ MSR-B2 (EN16094 Procedure B)
Warranty residential use	15 years

MOST IMPORTANT FLOOR PARAMETERS

Dimensional Stability (6h - 80°C)				
	MD	L-average: ≤ 0.2%;	ISO 23999	0.09mm
	CD	W-average: ≤ 0.2%;	C	0.11mm
	Curling	≤ 2.0mm	ISO 23999	0.12mm
Surface coin scratch	UV coating not scratched or other visual defect			
Installation by hand	Easy to install and remove			
Resistance to stains (120 minutes) Grade 5 being the best Visual test				
	Acetone	Factory standard	4	
	Mustard		5	
	Iodine		4	
	Shoe polish		5	
	Market pen		5	
Visual (surface) Defects: Contamination, coating defects cuts, dents, blisters, bubbles, uneven texture or gloss, broken, etc	No discernible visual defect			

BENEFITS OF SPC FLOORING

Easy installation

SPC can be easily installed. Using newer loose-lay systems makes it possible to use SPC with minimal surface preparation. With this solution, flooring installation costs, as well as installation time, can be reduced.

Waterproof

One of the biggest benefits of choosing SPC flooring is that it is completely waterproof. Due to its rigid, PVC core layer, these planks can withstand liquids and spills unlike many of the flooring products that it mimics.

Style and Comfort

SPC has a softer surface than other flooring materials such as wood or stone. It is also more comfortable underfoot and sound-reducing, which is a very important trait for many facilities.

Environmentally Friendly

Choosing SPC can help your facility, as many of the materials used in its production are those of renewable products, recyclable content, and low-emitting materials.

Budget

Want flooring that is waterproof, scratch, stain and fade-resistant, yet won't break? SPC flooring is generally less expensive than the luxury floors than hardwood or stone.

Maintenance

SPC never has to be sanded or sealed, making it much easier to maintain than other luxury floors. Since it is completely waterproof, just grab a damp mop and you are all set!

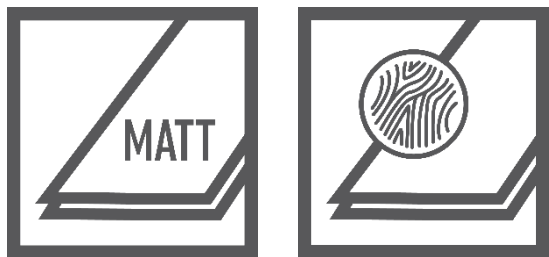
TOOLS NEEDED FOR THE INSTALLATION

Straight edge
Pencil, Chalk Line
Measuring tape
Power Crosscut Saw
Jigsaw for cutting irregular shapes
Blue or Green Painter's Tape
Assorted spacers
The rubber hammer and form sheet



PRIMERRA. EXCELLENT DESIGN

- The perfect reproduction of the colour and structure make Primerra naturally beautiful. Thanks to special embossing technology, the wood-like panels resemble authentic boards even more.



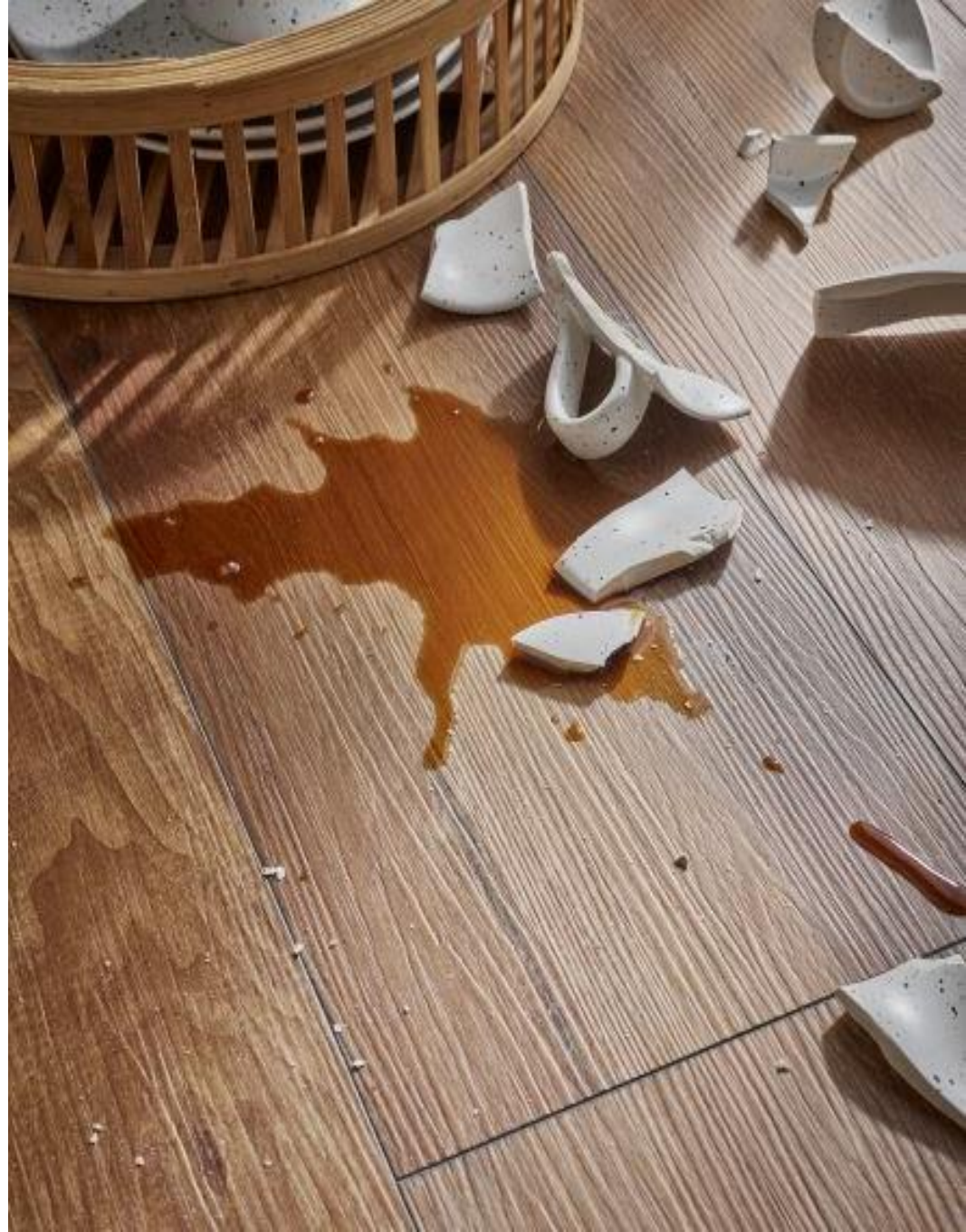
PRIMERRA. WHAT CAN THIS FLOOR DO?

- DIMENSIONAL AND COLOUR STABILITY: the core and wear layers guarantee dimensional stability regardless of the ambient temperature, and the UV resistant decorative layers – a colour that will not change over the years
- DURABILITY: resistance to impact, scratches and other mechanical damage unprecedented in any floor category.
- STAIN RESISTANCE: Primerra is resistant to substances that can cause permanent staining, and is easy to clean.

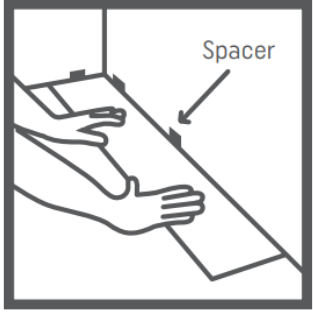


PRIMERRA. WHAT CAN THIS FLOOR DO?

- THERMAL COMFORT: Walking barefoot on this floor is a pleasant experience. It can also easily and conveniently be used for playing on – the materials it is made of are warm to the touch..
- INSTALLATION WITHOUT EXPANSION JOINTS: allows you to lay a uniform floor throughout the house.

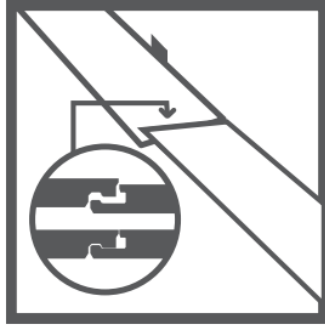


INSTALLATION



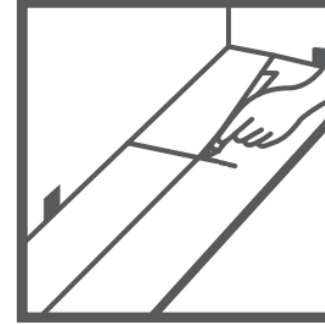
1.

Start at a corner, place first plank with tongue side facing wall. Use spacers to maintain an expansion space of 8-12 mm between wall and flooring.



2.

Insert 2nd plank's end tongue to 1st plank's end groove at an angle of 15° to 20°. The plank will click into place when lowered. Line up the edges carefully. Planks should be flat to the floor.



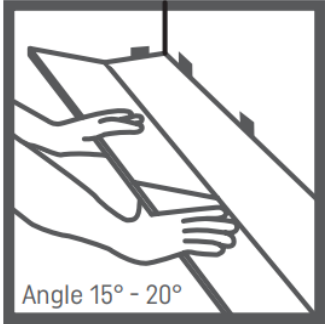
3.

For the last plank of a row, flip a full plank to its underside and place beside the row. Measure and mark the required length. Use a ruler and utility knife to score the plank and snap off. Insert as in the previous diagram.



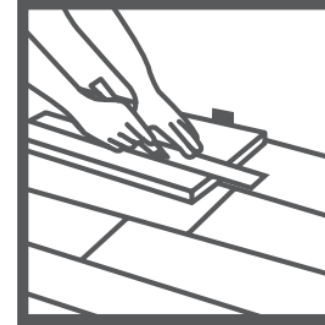
4.

Begin next row with the last cut off piece from the previous row to Stagger the pattern.



5.

To start the second row, assemble your entire row on the subfloor before attaching it to the first row. To attach, tilt and push the side groove of the first row at an angle of 15° to 20°. Lower and click into place lining the edges up carefully. Continue laying remaining planks in order.



6.

Begin next row with the last cut off piece from the previous row to stagger the pattern.



7.

Heating vents require an expansion room. First, cut the plank to the correct length. Place the cut plank at this actual position and use a ruler to measure the areas to be cut out and mark them. Cut out the marked points allowing the necessary expansion distance.



8.

The gap between the bottom of a door and the vinyl flooring should be 1 cm height. To trim door frames, turn a plank upside down. Place it next to the door frame as per diagram. Use a handsaw and cut the necessary height so that the planks can slide easily underneath the frame.

FLOOR SYSTEM

In VOX we think globally about the interiors, which is why we created the flooring system including high quality products that match our floors – check our skirting boards and underlays.

ESP101



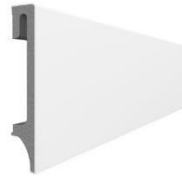
ESP201



ESP301



ESP401

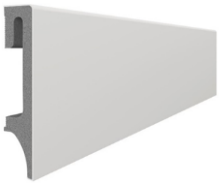


ESP501

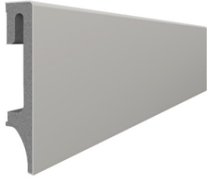


- ESPUMO skirting board collection
- Extremely durable skirting boards
- Espumo skirting boards allow to hide electric wires

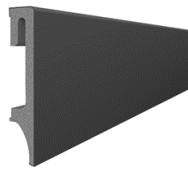
ESP202



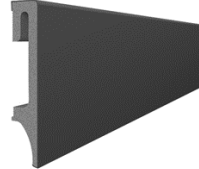
ESP203



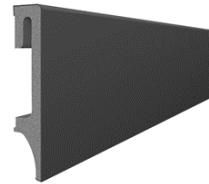
ESP205



ESP406



ESP506



IMPACT
RESISTANT


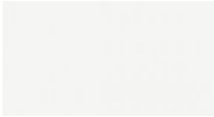








WATERPROOF







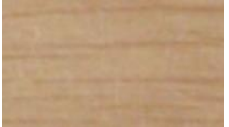


GLUE
INSTALLATION

FLOOR SYSTEM - VILO SKIRTING BOARDS

SI No	ESQUERO	Shade Name	
1	3009824 SKIRTING BOARD 608 ESQUERO 250	Red Oak	
2	3009827 SKIRTING BOARD 601 ESQUERO 250	White	
3	3009828 SKIRTING BOARD 602 ESQUERO 250	Arizona Sycamore	
4	3009831 SKIRTING BOARD 605 ESQUERO 250	Western Sycamore	
5	3009832 SKIRTING BOARD 607 ESQUERO 250	Mexican Sycamore	
6	3009834 SKIRTING BOARD 610 ESQUERO 250	Acorn Oak	
7	3009835 SKIRTING BOARD 611 ESQUERO 250	Mountain Pine	
8	3009836 SKIRTING BOARD 612 ESQUERO 250	Cork Oak	



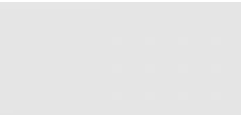
FLOOR SYSTEM - VILO SKIRTING BOARDS

SI No	SMART FLEX	Shade Name	
1	3007173 SKIRTING BOARD 530 SMART FLEX 250	Arizona Oak	
2	3007174 SKIRTING BOARD 533 SMART FLEX 250	Burnt Oak	
3	3007176 SKIRTING BOARD 544 SMART FLEX 250	Dartford Oak	
4	3008100 SKIRTING BOARD 5101 SMART FLEX 250	Siberian Oak	
5	3008101 SKIRTING BOARD 5102 SMART FLEX 250	Norway Spruce	
6	3008102 SKIRTING BOARD 5103 SMART FLEX 250	Spanish Oak	
7	3008105 SKIRTING BOARD 5106 SMART FLEX 250	Castle Oak	

SI No	SMART FLEX	Shade Name	
8	3008106 SKIRTING BOARD 5107 SMART FLEX 250	Terra Oak	
9	3009521 SKIRTING BOARD 5114 SMART FLEX 250	Old Plane	
10	3009530 SKIRTING BOARD 5115 SMART FLEX 250	Sunset Oak	
11	3009539 SKIRTING BOARD 5116 SMART FLEX 250	Roma Oak	
12	3009548 SKIRTING BOARD 5117 SMART FLEX 250	Oriental Plane	
13	3009557 SKIRTING BOARD 5118 SMART FLEX 250	Whitewashed Alder	
14	3009566 SKIRTING BOARD 5119 SMART FLEX 250	Carrara Oak	

FLOOR SYSTEM - VILO SKIRTING BOARDS

SI No	IZZI	Shade Name	
1	3007178 SKIRTING BOARD 750 IZZI 250	Iroko	
2	30071798 SKIRTING BOARD 758 IZZI 250	Mocca Oak	
3	3007180 SKIRTING BOARD 759 IZZI 250	Honey Alder	
4	3007182 SKIRTING BOARD 761 IZZI 250	Rustic Ash	
5	3007183 SKIRTING BOARD 762 IZZI 250	Milky Oak	
6	3007203 SKIRTING BOARD 728 IZZI 250	Dark Walnut	
7	3007691 SKIRTING BOARD 773 IZZI 250	Polish Elm	
8	3008458 SKIRTING BOARD 7108 IZZI 250	Caucasian Oak	

SI No	IZZI	Shade Name	
9	3008459 SKIRTING BOARD 7109 IZZI 250	Kermes Oak	
10	3008460 SKIRTING BOARD 7110 IZZI 250	Sandy Oak	
11	3008461 SKIRTING BOARD 7111 IZZI 250	Cork Oak	
12	3008462 SKIRTING BOARD 7112 IZZI 250	Turkey Oak	
13	3008540 SKIRTING BOARD 7113 IZZI 250	White	
14	3009575 SKIRTING BOARD 7120 IZZI 250	Gnarled Pine	
15	3009584 SKIRTING BOARD 7121 IZZI 250	Natural Oak	

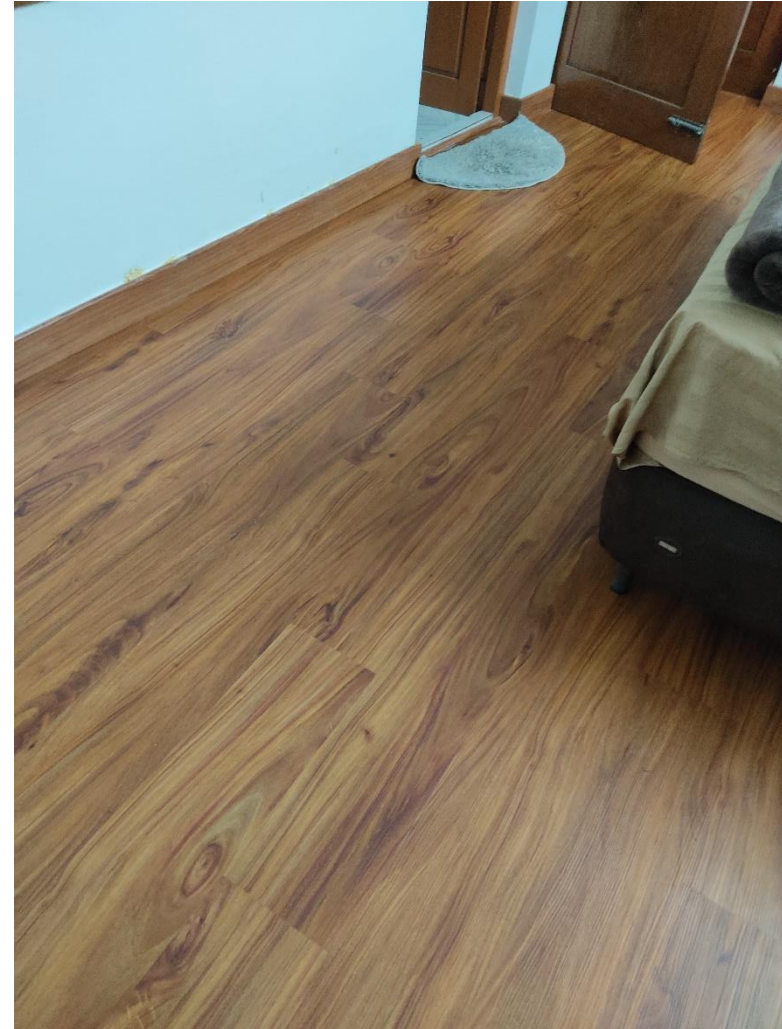
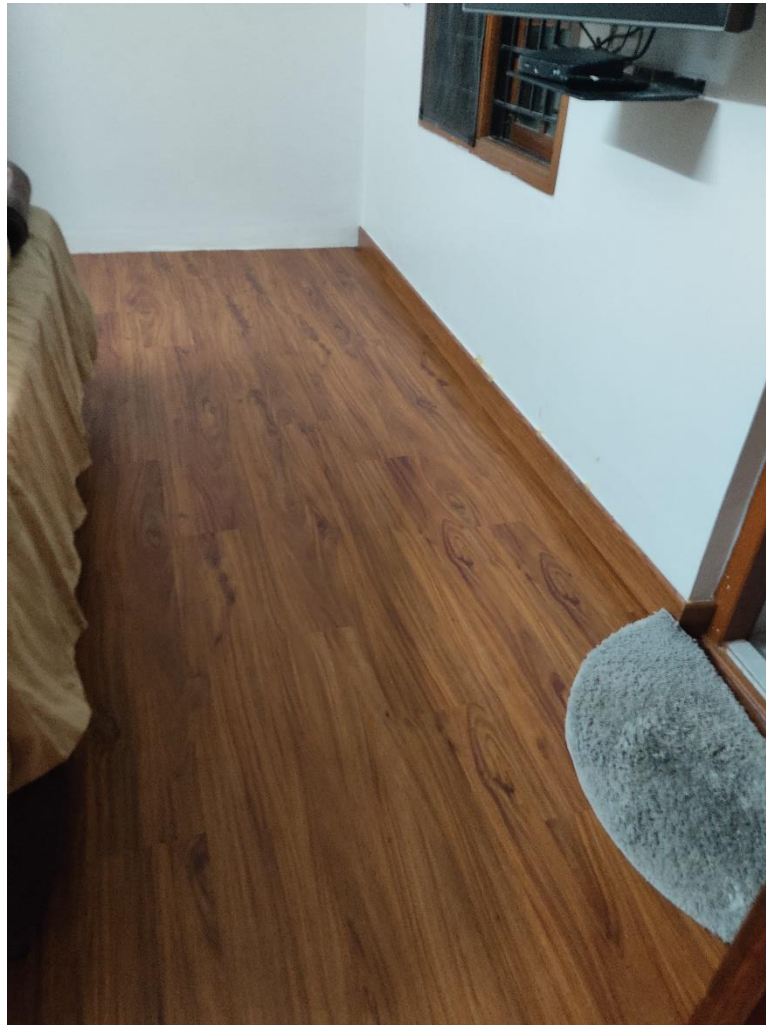
SPC FLOORING CARE & MAINTAIN

1. Heavy furniture, pet paws, sand, or any sharp objects will leave scratches and abrasions on the SPC flooring surface. Extra care is needed when it comes to contact with sharp and abrasive objects.
2. Clean with a damp mop for everyday care. Wash the floor occasionally with a gentle (non-abrasive) floor cleaner – always follow cleaning product instructions and adhere to caution before use. Do not use detergents or abrasive cleaners.

STORAGE

1. The product should be stored in covered rooms, out of the reach of heating devices and direct sunlight.
2. In conditions that protect the profiles against contamination, deformation and mechanical damage.
3. The packages should be stored on shelves or pallets with a length not shorter than the length of the package.
4. It is not allowed to leave the ends of the package unsupported and stack more than 10 packages on top of each other.

Projects



THANK YOU